



# ACR/Summary<sup>®</sup> and ACR/Detail<sup>®</sup>

## Installation Guide for Windows<sup>®</sup> | Release 4.4



Home Office

1240 East Diehl Road, Suite 400

Naperville, IL 60563

Tel: + 1.630.505.1800

[www.infogix.com](http://www.infogix.com)



Infogix, the Infogix checkmark logo, Unitech Systems, Inc., Infogix Assure, Infogix Insight, ACR, ACR/Detail, ACR/Summary, ACR/Workbench, ACR/Connector, ACR/Instream, ACR/File, Information Integrity, and Information With Confidence are registered trademarks of Infogix, Inc.

Infogix ACR, Infogix EM, Infogix ER, Infogix Perceive, Infogix Controls, Infogix Nexix, ACR/TransMatch, and The Information Integrity Experts are trademarks of Infogix, Inc.

Any other trademarks or registered trademarks are the property of their respective owners.

Copyright 1998-2012 Infogix, Inc. All rights reserved.

Confidential—Limited distribution to authorized persons only, pursuant to the terms of Infogix, Inc. (FKA Unitech Systems, Inc.) license agreement. This document is protected as an unpublished work and constitutes a trade secret of Infogix, Inc.

This document and the information contained herein are the property of Infogix, Inc. Reproduction or use in whole or in part of this document and the information contained herein by anyone without prior written consent of Infogix, Inc. is prohibited.

Publication Number 2011

Publication Date 7/10/12

---

# Contents

## Chapter 1 Introduction

About This Guide .....	5
Contacting Customer Support .....	6

## Chapter 2 Installing ACR/Summary and ACR/Detail Server

System Requirements for the Server .....	7
Overview of Server and Client Installation and Setup Steps .....	8
Installing the CD .....	9
Increase the Maximum File Size (Optional).....	11
Licensing Key .....	11

## Chapter 3 Configuring and Licensing the Server

When You Do Not Have to Create a Logon Account .....	13
Creating a Logon Account on Windows 2003 .....	14
Creating a Logon Account on Windows 7 or Windows Server 2008 .	16
Starting the Service .....	18
Setting and Modifying Server Properties .....	20
Implementing and Maintaining Your Licensing .....	25
Upgrading from a Pre-Release 4.0 Release.....	34

## Chapter 4 Installing a Client

Before You Begin .....	35
System Requirements for a Client.....	35
Steps for Installing a Client.....	36

**Chapter 5 Installing and Licensing ACR/Workbench**

System Requirements for ACR/Workbench ..... 37  
Overview of ACR/Workbench Installation and Setup Steps ..... 38  
Uninstall the Previous Release if Appropriate ..... 38  
Installing the CD ..... 38  
Installing the Net Express Licensing Key ..... 39  
Upgrading from a Pre-Release 4.0 Release..... 40  
Using ACR/Workbench..... 40

**Chapter 6 Upgrading from a Pre-Release 4.0 Release**

Upgrading ACR/Summary for Windows ..... 41  
Upgrading ACR/Detail for Windows ..... 45

**Index ..... 49**

---

## Introduction

This chapter provides an overview to this guide and includes the following sections:

- “About This Guide” on page 5
- “Contacting Customer Support” on page 6

## About This Guide

This guide provides installation and licensing instructions for the following products

- ACR/Summary and ACR/Detail Server and Clients.
- ACR/Workbench.

## Audience

This guide is intended for the person who will install and/or upgrade the products listed above.

## Organization of Information

Chapter 1, “Introduction” describes the components of the guide and provides information for contacting Customer Support.

Chapter 2, “Installing ACR/Summary and ACR/Detail Server” includes system requirements and instructions for installing the Server and, for first-time installations, installing the Net Express licensing key.

Chapter 3, “Configuring and Licensing the Server” explains how to configure the server and how to activate and maintain your licensing.

Chapter 4, “Installing a Client” includes system requirements and instructions for installing ACR/Summary Client or ACR/Detail Client.

Chapter 5, “Installing and Licensing ACR/Workbench” provides system requirements and instructions for installing and licensing ACR/Workbench.

Chapter 6, “Upgrading from a Pre-Release 4.0 Release” provides instructions for upgrading ACR/Summary and ACR/Detail Server and ACR/Workbench from a release previous to Release 4.0.

## Contacting Customer Support

If you need assistance, contact Infogix Customer Support:

U.S. and Canada: Call us at (630) 505-1890 or send a fax to (630) 505-1883. You can also send e-mail to [support@infogix.com](mailto:support@infogix.com).

Outside the U.S. and Canada: Infogix maintains offices around the world. Check our Web site at [www.infogix.com](http://www.infogix.com) for the closest Infogix office or e-mail us at [support@infogix.com](mailto:support@infogix.com).

---

## Installing ACR/Summary and ACR/Detail Server

This chapter provides directions for installing ACR/Summary and ACR/Detail Server. It contains the following sections:

- System Requirements for the Server - page 7
- Overview of Server and Client Installation and Setup Steps - page 8
- Installing the CD - page 9
- Increase the Maximum File Size (Optional) - page 11
- Licensing Key - page 11

### System Requirements for the Server

Following are the minimum system requirements for the ACR/Summary and ACR/Detail Server:

Category	Requirement
<b>Hardware and Operating System</b>	IBM or compatible machine with Microsoft Windows Server 2003, Windows 7, or Windows Server 2008
<b>Memory</b>	At least 100 MB of Random Access Memory (RAM)
<b>Disk Space</b>	A hard drive with at least 50 MB of free space
<b>Drive</b>	CD-ROM
<b>Network Communication</b>	TCP/IP protocol

If you need other system requirements, see the following sections:

- “System Requirements for a Client” on page 35
- “System Requirements for ACR/Workbench” on page 37

# Overview of Server and Client Installation and Setup Steps

The steps for installation and setup of the ACR/Summary and ACR/Detail Server and Client(s) are as follows. Where additional detail is needed, the steps provide references to the appropriate sections.

1. Before installing the server, do the following:
  - Ensure that you have an ACR/Summary and ACR/Detail Server installation CD.
  - Ensure that you have administrator rights for the system where you will install ACR/Summary and ACR/Detail Server.
  - Verify that the system where you plan to install the server meets the requirements described in the next section.
  - Determine whether you will use dual install, as described in the next step.
2. If you are upgrading from a previous release, uninstall the old release only if appropriate:
  - If you want to install and test the new release of the Server while continuing to support the old release (this is called a dual install), do not uninstall the old release.
  - If you do not want to perform a dual install, stop the service on the Server Properties dialog box and uninstall ACR/Summary and ACR/Detail Server using the **Add or Remove Programs** option on the Control Panel.
3. Insert the ACR/Summary and ACR/Detail Server CD and follow the wizard prompts (see “Installing the CD” on page 9).
4. Increase the maximum file size if appropriate (see “Increase the Maximum File Size (Optional)” on page 11).
5. If this is the first installation of ACR/Summary and ACR/Detail Server, install the licensing key (see “Licensing Key” on page 11).
6. If this is the first installation of ACR/Summary and ACR/Detail Server, create a New User account for the Server that will be used to log on to the service, start and stop the Server, configure the Server, and activate and maintain the licensing (see “Creating a Logon Account on Windows 2003” on page 14 or “Creating a Logon Account on Windows 7 or Windows Server 2008” on page 16).



7. Set up or modify properties of the Server in the Server Properties dialog box (see “Setting and Modifying Server Properties” on page 20.)
8. Implement or update your licensing as appropriate. See “Implementing and Maintaining Your Licensing” on page 25.
9. If you are upgrading from a release previous to Release 4.0, you must follow the instructions for your product in “Upgrading from a Pre-Release 4.0 Release” on page 41.
10. If you are installing an upgrade, uninstall existing clients using the **Add or Remove Programs** option on the Control Panel.
11. Install the ACR/Summary Client and/or ACR/Detail Client on user PCs (see “Steps for Installing a Client” on page 36).

## Installing the CD

---

**Note:** Before you begin, review the “Overview of Server and Client Installation and Setup Steps” above. Ensure that you have uninstalled the previous release only if you do not want to use the dual install feature described in step 2 on page 8.

---

1. Insert the ACR/Summary and ACR/Detail Server installation CD in the CD-ROM drive on the machine that will be the server. Normally, the installation program starts automatically. If it does not, run the **setup.exe** program on the CD.
2. On the Welcome page, click **Next**.
3. On the Select Destination Directory page, accept the default installation directory, or browse for the directory you prefer. The default installation path is: **C:\Infogix\SumDetServer**.
4. Click **Next**.
5. On the Communication Parameters page, accept the defaults for the administration and user port numbers, or enter the port numbers that apply in your environment.  
The **Administration port number** is used for starting and stopping the ACR/Summary and ACR/Detail Server.  
The **User port number** is used by the clients to communicate requests to the server for ACR/Summary and ACR/Detail services. Some examples of ACR/Summary services are updating the

## 2 ■ Installing ACR/Summary and ACR/Detail Server

---

### *Installing the CD*

definition database and performing balancing. ACR/Detail services include updating the definition database and performing reconciliation

---

**Note:** The user port number you enter here must also be entered in the Add/Edit Configuration dialog box of the ACR/Summary and/or ACR/Detail Client on the user's PC.

---

Typically, the default port numbers are not in use by any common protocol such as FTP, SMTP, SNMP, or HTTP. However, another software product installed on your system may use these ports. If this is the case, you will need to select different port numbers that are not already assigned to another service.

The Administrative and User Port numbers must be different. For instance, you cannot enter 3000 for both. Valid port numbers are between 1 and 65535.

6. Click **Next**.
7. On the Log File Options page, if you want the ACR/Summary and ACR/Detail Server to log the processing messages that it issues, make sure that the **Write messages to log file** check box is marked.

By default, the ACR/Summary and ACR/Detail Server will log messages in the **SumDetSv.log** file. The log file will be located in the same folder where the ACR/Summary and ACR/Detail Server is installed. If you prefer to save the log file in a different folder, click **Browse**. Messages will be retained in the log file for 30 days, unless you specify a different time period.
8. Click **Next** to review the installation parameters.
9. If you are satisfied with the information shown, click Next to perform the installation.

Otherwise, click **Back** to go back to previous pages so you can change the installation parameters. You can also change settings for the Communication and Logging parameters after installation through the Server Properties dialog box. See “Setting and Modifying Server Properties” on page 20.
10. When the Installation Completed page appears, click **Finish** to complete the installation.
11. If you are prompted to restart the computer, click **OK** in the Install dialog box. Otherwise, restart your computer after you have completed Chapter 3, “Configuring and Licensing the Server.”

You can now proceed to the next section, "Licensing Key."

## Increase the Maximum File Size (Optional)

ACR/Summary and ACR/Detail ship with environment variable FILEMAXSIZE=4. This setting will be appropriate for users who always use a file input size of 4GB or less. If you use input files greater than 4GB, you will have to override this value by setting FILEMAXSIZE=8 (no limit) in the extfh configuration file.

To override the environment variable FILEMAXSIZE, create the file extfh.cfg, and add the following two lines:

```
[XFH-DEFAULT]  
FILEMAXSIZE=8
```

Then, modify the batch run .skl or .bat file to set the new variable. Add a line after the SET COBCPY= command line:

For ACR/Detail, add:

```
SET EXTFH=C:\Infogix\Detail32\extfh.cfg
```

For ACR/Summary, add:

```
SET EXTFH=C:\Infogix\Summary32\extfh.cfg
```

## Licensing Key

If this is the first installation of an ACR/Summary and ACR/Detail Server, you must install the licensing key. If you know the proper licensing key is already installed, skip this section.

---

**Note:** After the licensing key is installed, you will still need to implement and maintain your licensing. Instructions will be provided in the next chapter in the section "Implementing and Maintaining Your Licensing" on page 25.

---

To install the licensing key, do the following:

1. Use Windows Explorer to display the contents of the ACR/Summary and ACR/Detail Server folder that you installed in step 3 on page 9. The default location is as follows:

```
C:\Infogix\SumDetServer
```

2. Open the application server subfolder.

```
C:\Infogix\SumDetServer\appserv
```

## 2 ■ Installing ACR/Summary and ACR/Detail Server

---

### Licensing Key

3. Select **setup.exe** to launch the Micro Focus Application Server for Net Express 4.0 Setup wizard.

---

**Note:** Setup.exe cannot be executed in a 64-bit Windows environment, so in this situation an incompatible file version error occurs.

In a 64-bit environment, select **aps10a40.exe** instead to launch the Micro Focus Application Server Service Pack for Net Express 4.0 Setup wizard.

---

If you need to install the licensing key, the setup program wizard will prompt you through the process, as described in the next step.

If you already have the proper licensing key installed, an “Application Server For Net Express 4.0 is already Installed” dialog box displays. Click **No** at the upgrade option, and **OK** at the second dialog box that displays.

4. To proceed with the licensing setup, follow the instructions on the screen and accept the default settings.

---

**Note:** Infogix recommends accepting the default location for the licensing files. The licensing files cannot be in the same location as the ACR/Summary and ACR/Detail Server.

---

5. Call Customer Support when you reach the License Registration dialog box. See “Contacting Customer Support” on page 6. A representative will give you a serial number and a license number to enter in the dialog box.
6. Once you have entered the numbers, click **OK**. Then, click **Next** until the following message displays:

License installed OK

Click **OK**, again. Then, click **Next** until the Setup Completed dialog box displays.

---

## Configuring and Licensing the Server

This chapter provides instructions for configuring and licensing ACR/Summary Server and ACR/Detail Server. It contains the following sections:

- “When You Do Not Have to Create a Logon Account” on page 13
- “Creating a Logon Account on Windows 2003” on page 14
- “Creating a Logon Account on Windows 7 or Windows Server 2008” on page 16
- “Starting the Service” on page 18
- “Setting and Modifying Server Properties” on page 20
- “Implementing and Maintaining Your Licensing” on page 25
- “Upgrading from a Pre-Release 4.0 Release” on page 34

---

**Note:** If you are upgrading from a release previous to Release 4.0, after you complete the steps in this chapter, you must follow the instructions for your product in “Upgrading from a Pre-Release 4.0 Release” on page 41.

---

### When You Do Not Have to Create a Logon Account

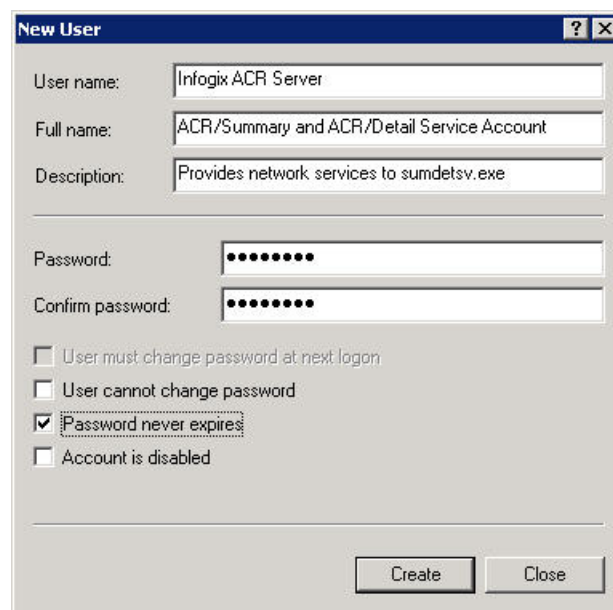
You do not have to create a logon account for the server in the following situations:

- You are upgrading to a new release and have already created a user account.
- You already have an account that has the appropriate level of administrative privileges and access to other network directories.

## Creating a Logon Account on Windows 2003

Create a new user logon account on Windows 2003 as follows:

1. Go to the Control Panel. Select **Administrative Tools > Computer Management > Local Users and Groups**.
  - a. Highlight **Users**.
  - b. Click **Action** on the menu bar and select **New User**.
2. When the New User dialog box displays, create it following the instructions below.



- a. Enter the **User name**, **Full name**, and **Description** fields. You can copy the names and description shown New User dialog box sample above or use your own.
  - b. Enter a **Password**.

---

**Note:** If input files for ACR/Summary or ACR/Detail jobs reside elsewhere on your network, make sure the username and password you specify are authorized to access the directories where those files reside.

---

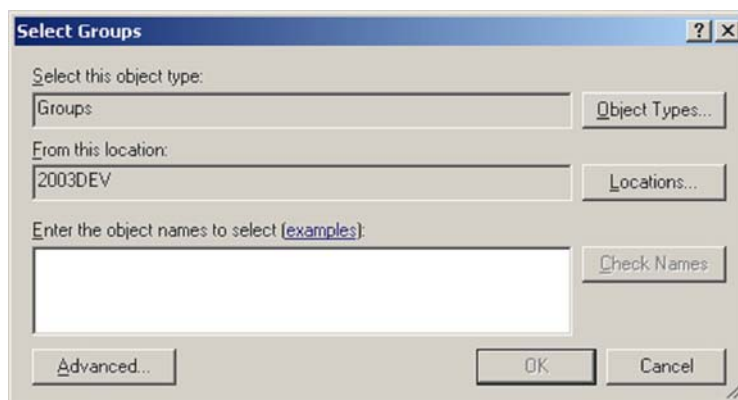
- c. Disable the **User Must Change Password at Next Logon** option.
    - d. Enable the **Password Never Expires** option.
3. Click **Create > Close**.

4. In the right frame of the Local Users and Groups window, select the user name you just created.

In the properties dialog box for the ACR/Summary and ACR/Detail Server (or whatever user name you specified for the server account), click the **Member Of** tab and click **Add**.



5. Click **OK** and close.
6. In the Select Groups window, enter **Administrators** in the object names area text box. (The contents of **From this location** will vary depending on your Windows version.)



7. Click the **Check Names** button to display the full object name.

### 3 ■ Configuring and Licensing the Server

---

#### *Creating a Logon Account on Windows 7 or Windows Server 2008*

8. Click **OK** to accept. Click **OK** again to create the account. The Member Of tab shows that the ACR/Summary and ACR/Detail Server is a member of the Administrators and Users groups. If appropriate, you can also make the account a member of additional groups.

To start the service, go to “Starting the Service” on page 18.

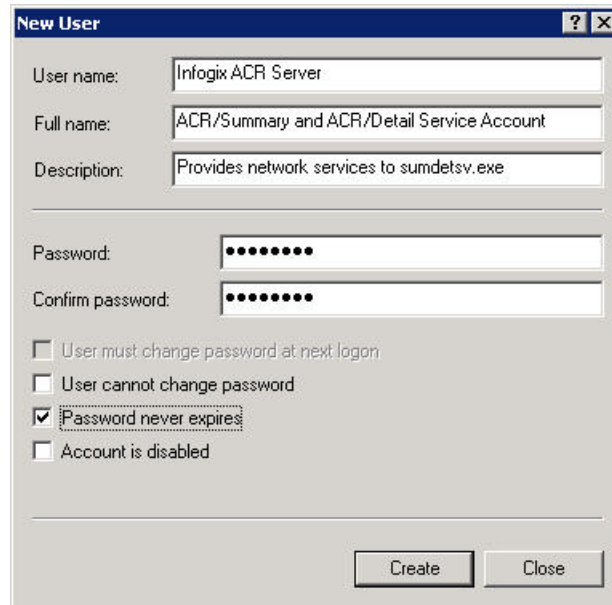
## Creating a Logon Account on Windows 7 or Windows Server 2008

Create a new user logon account on Windows 7 or Windows Server 2008 as follows:

1. Select **Start**.
2. Do one of the following:
  - On Windows 7, select **Start > Control Panel > Administrative Tools**. If you do not see **Administrative Tools** in the Control Panel icons, above the right corner of the list, select **View by > Small icons**.
  - On Windows Server 2008, select **Start > Administrative Tools**.
3. Select **Computer Management > Local Users and Groups**. This window is divided vertically into 3 sections.
  - a. In the middle section, highlight **Users**.
  - b. In the right section, select **More actions** and select **New User**.



4. When the New User dialog box displays, create it following the instructions below.



- a. Enter the **User name**, **Full name**, and **Description** fields. You can copy the names and description shown New User dialog box sample above or use your own.
- b. Enter a **Password**.

---

**Note:** If input files for ACR/Summary or ACR/Detail jobs reside elsewhere on your network, make sure the username and password you specify are authorized to access the directories where those files reside.

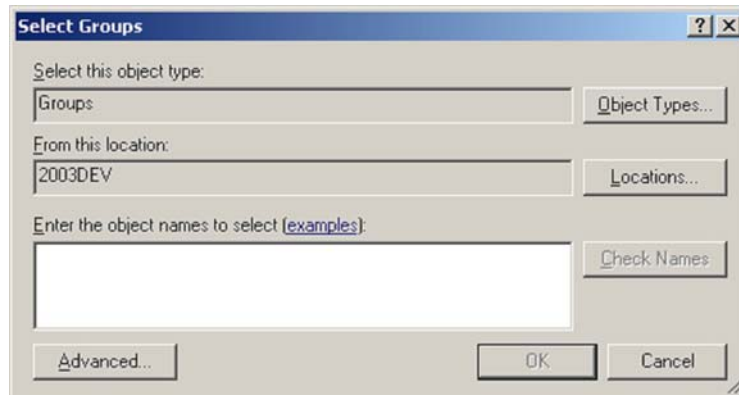
---

- c. Disable the **User Must Change Password at Next Logon** option.
  - d. Enable the **Password Never Expires** option.
5. Click **Create** > **Close** to return to the previous window.

## 3 ■ Configuring and Licensing the Server

### Starting the Service

6. In the Local Users and Groups window, select **Users** to display the Select Groups window.
7. In the Select Groups window, enter **Administrators** in the object names area text box. (The contents of **From this location** will vary depending on your Windows version.)



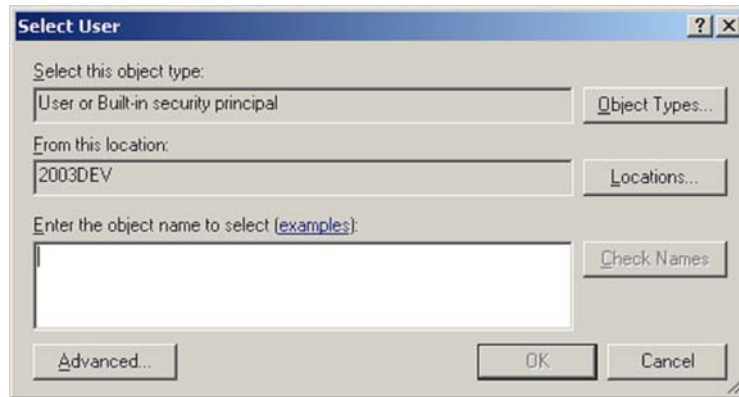
8. Click the **Check Names** button to display the full object name.
9. Click **OK** to accept. Click **OK** again to create the account. The Member Of tab shows that the ACR/Summary and ACR/Detail Server is a member of the Administrators and Users groups. If appropriate, you can also make the account a member of additional groups.

To start the service, go to the next section.

## Starting the Service

1. From the Control Panel, select **Administrative Tools > Services > ACR SumDet Server x.x**, where x.x represents the release number. Including the release number in the service name allows you to install multiple releases on the same machine.
2. When the Properties dialog box displays, click the **Log On** tab.
  - a. For **Log on as**, select This account.

3. Enter the ACR/Summary and ACR/Detail account you created. (If you did not create a new user account, enter an account name that has the appropriate level of administrative privileges and access to other network directories.) Or click **Browse** to open the Select User dialog box. (The contents of **From this location** will vary depending on your Windows version.)



4. If you use the Select User dialog box, click the **Check Names** button to display the full account name. Then click **OK** to close and return to the Properties dialog box (Log On tab.)
5. Type in the account's **Password**. You need to do this, even though the asterisks in the Password field make it look like a password has already been entered.
6. On the **General** tab, change the Startup type to **Automatic** if you want the ACR/Summary and ACR/Detail Server to automatically start up each time you reboot. Otherwise, whenever you reboot, you will have to start the server from the Services dialog box.

---

**Note:** The folder names for the path listed in **Path to executable** are truncated to eight characters. The full name of this path is:

**C:\Infogix\SumDetServer\sumdetsv.exe**

---

7. Click **Start** > **OK**. The ACR/Summary and ACR/Detail Server is now ready to process requests from an ACR/Summary client or the ACR/Detail client. Review the information on “Setting and Modifying Server Properties” on page 20 to verify the default settings or establish settings for e-mail notification or an ACR/Connector configuration.

## Setting and Modifying Server Properties

Once you have created a logon account, you can set up and modify properties of the ACR/Summary and ACR/Detail Server in the Server Properties dialog box. Properties include communications, e-mail notification, message logging, and runtime options, as well as the licensing Control File. Some of these properties are set during installation of the server, while others can only be specified in the Server Properties dialog box. For example, if you want to select an ACR/Connector configuration or activate the e-mail notification feature, you must specify the appropriate settings in the properties dialog box. To display the ACR/Summary and ACR/Detail Server Properties dialog box, select the **ACR SumDet Server x.x** icon (where x.x represents the release number) on the Control Panel. The upcoming sections describe the properties on each tab.

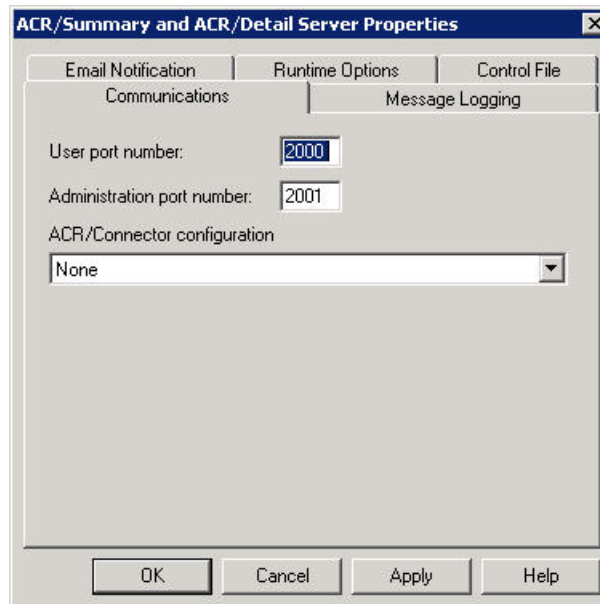
---

**Note:** **64-bit systems:** If you are running the server on a 64-bit system, the **ACR SumDet Server x.x** icon does not appear on the Control Panel. Instead, Windows redirects all 32-bit applications to another location. To set the server properties, open ACRPlusCplxx.cpl (ACR/Summary and ACR/Detail Server Properties application) in the appropriate 32-bit SysWOW64 folder (C:\WINDOWS\SysWOW64).

---

## Communications

The Communications tab shows port number settings and optional ACR/Connector configuration selection.



The **User port number** and **Administration port number** display the Communication Parameters established during installation, as described in step 5 on page 9. The example above shows the default port numbers that are generally used. If it is necessary to change the port numbers due to a conflict with some other software, click **Help** for details.

If your ACR/Summary or ACR/Detail installation includes ACR/Connector, select the configuration name to enable. Do not select an ACR/Connector configuration unless you want to activate ACR/Connector for all jobs running on the server.

Keep in mind that the ACR/Connector IN/Sync feature lets ACR/Connector launch other applications on other platforms (such as the mainframe) depending on the outcome of specific ACR/Summary or ACR/Detail jobs. This is desirable when jobs are running in production on the ACR/Summary and ACR/Detail Server. For example, suppose your organization has a system that can issue pager messages. You might have IN/Sync tell the paging system to send a pager message whenever a particular job issues a return code corresponding to a specified out-of-balance condition.

## 3 ■ Configuring and Licensing the Server

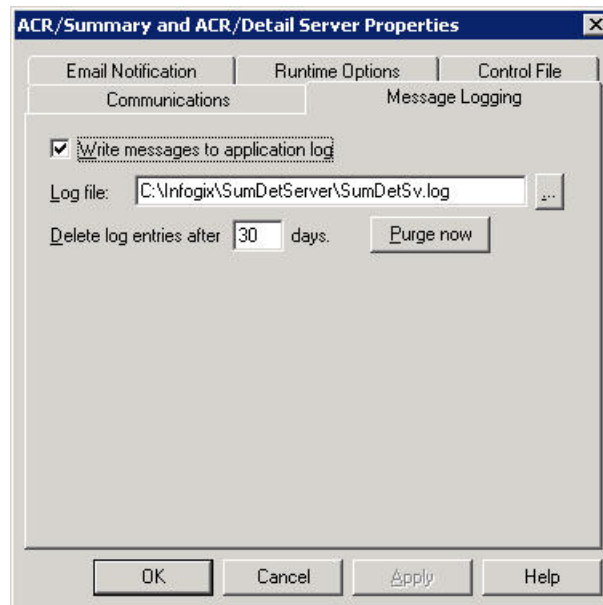
### Setting and Modifying Server Properties

When users are setting up and testing ACR/Summary or ACR/Detail jobs, they probably won't want IN/Sync to launch other applications based on the jobs' outcomes. In the example above, it would be annoying for a supervisor to receive a pager message each time a test job was out of balance. This could happen if IN/Sync was set up to trigger a pager message for a production job that had the same name and issued the same return code as a test job.

If you are using ACR/Connector, the best way to avoid unexpected results may be to set up two ACR/Summary and ACR/Detail Server installations—one for testing and one for production. Then, implement the IN/Sync feature on the production server, but not on the test server. Users can switch from testing to production by running their jobs on the appropriate server. For more information, see the ACR/Connector Installation and User Guide.

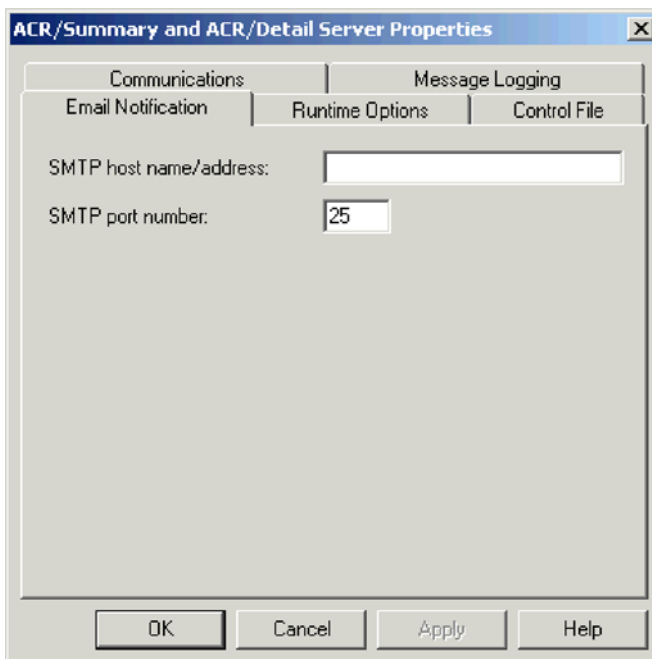
### Message Logging

The Message Logging tab displays the Log File Options established during installation, as described in step 7 on page 10. Messages are automatically deleted from the log after the set number of days. The **Purge now** button enables you to delete all the log entries at any time. Click **Help** for details.



## E-mail Notification

To activate the ACR/Summary and ACR/Detail e-mail notification feature, specify the host name/address and port number of your SMTP Internet mail server. Click **Help** for details.



For **SMTP host name/address**, enter the host name or IP address of your Internet mail server. For **SMTP port number**, accept 25 unless your mail server has a different port number.

Once you specify this information, ACR/Summary and ACR/Detail jobs that run on the server will be able to issue e-mail messages when they are out of balance. The user specifies the message to send and the e-mail address where the message should be sent. The message and e-mail address are specified in the Messages dialog box of ACR/Detail or the Direct Messages dialog box of ACR/Summary.

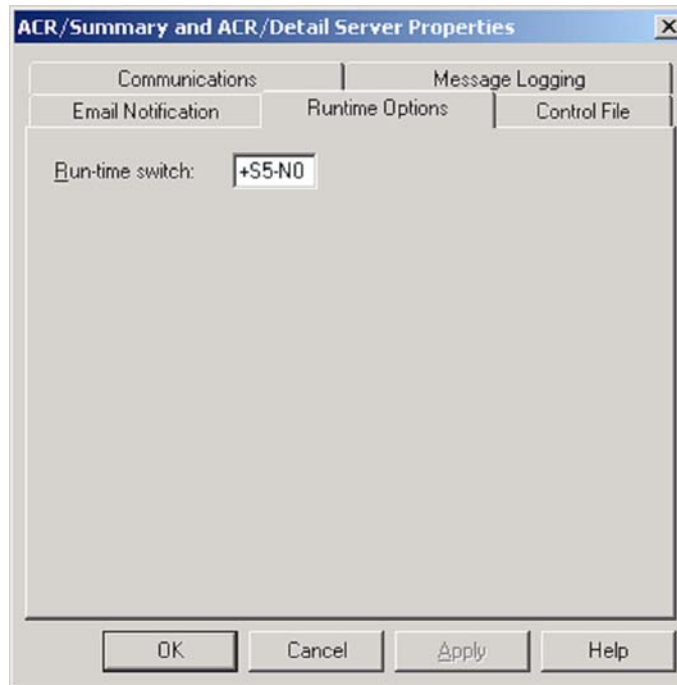
### 3 ■ Configuring and Licensing the Server

#### *Setting and Modifying Server Properties*

---

## Runtime Options

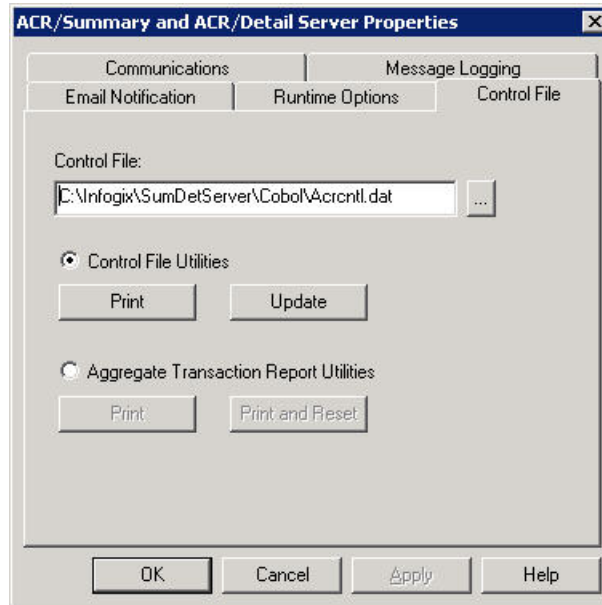
The Runtime Options tab should keep the default setting of **+S5-NO** for the **Run-time switch**. Do not change this setting unless told to do so by Customer Support.





## Control File

The Control File tab is documented in the following section on Implementing and Maintaining Your Licensing. Use the Control File tab to activate or update your product license.



## Implementing and Maintaining Your Licensing

The ACR/Summary and ACR/Detail Server includes a Control File that enables and controls access to your product in accordance with your license agreement. This section shows you how to do the following:

- Update your Control File.
- Generate the TM Aggregate Transaction Report, if requested.

### Updating a Control File

There are several situations when you need to perform this update. The most common include:

- When you install the ACR/Summary and ACR/Detail Server for the first time.
- When the terms of your license have changed.
- When your license for ACR/Summary and ACR/Detail is about to expire, as indicated by warning or error messages in your SYSOUT.

## 3 ■ Configuring and Licensing the Server

### *Implementing and Maintaining Your Licensing*

---

- When you want to run the product(s) on a machine with a host name that is not currently included in your license.

#### **Generating the Licensing Report(s)**

To generate the Product Report (file name UNI10PR.RPT), install and open the ACR/Summary and ACR/Detail Server and select the Control File tab from the server properties dialog box.

1. Complete the **Control File** field with the fully qualified name of the Control File specified during installation. To browse for the Control File (acrcntl.dat), click the button next to the field.

For example, if you accepted the default location during installation, the fully qualified name is:

```
C:\Infogix\SumDetServer\Cobol\acrcntl.dat
```

2. Select **Control File Utilities**.
3. Click **Print**.

The following report(s) will display in a new window:

- The Product Report (UNI10PR.RPT) displays the current licensing information from the Control File.
- If the Control File has ever included Transactional Measurement (TM) licensing, a Transactional Measurement Report (UNI10PRA.RPT) will be generated.

---

**Note:** If the TM column in the Product Report has the value of N (No), the TM licensing shown in the Transactional Measurement Report for that product is not currently in effect.

---

- Click **Print** to print the report(s).  
Following are examples of each report.

**Product Report (UNI10PR.RPT)**

```

releasenumber      PRODUCT REPORT  COPYRIGHT INFOGIX, INC.
DATE: 03042                PAGE:          1
TIME: 13:21                REPORT:       UNI10PR

FILENAME: "C:\Infogix\SumDetServer\Cobol\Acrctl.dat"
CUSTOMER:      INFOGIX, INCORPORATED
PAGE:060  WAIT:0900  RES:Y  I-RET:0000  W-RET:0000  E-RET:4000  UPDATE:004

PRODUCT  EXP  GRACE AUTH  TYPE TM  MODEL ID  HOSTNAME
U/SUM    99/999  7 ALL      H  N      001234X86X
                                     111111/111122222222233333333334444444445555555556666666666
                                     3333334444
                                     5555556666
                                     7777778888
                                     9999990000
                                     2222224444
                                     2222221111

VIOLATION:  FIRST DATE  LAST DATE  HOSTNAME  TYPE
              00/000    00/000
                                HARDWARE
    
```

**Transactional Measurement Report (UNI10PRA.RPT)**

```

releasenumber      TRANSACTIONAL MEASUREMENT REPORT  COPYRIGHT INFOGIX, INC.
DATE: mm/dd/yy                PAGE:          01
TIME: 15:20                REPORT:       UNI10PRA

CUSTOMER:      Infogix, INCORPORATED
PAGE:060  WAIT:0900  RES:Y  I-RET:0000  W-RET:0000  E-RET:4000  UPDATE:002

-----LICENSE-----
PRODUCT TM  IND  VALUE  GRACE  RESET  VALUE
U/SUM  RULD EXEC      5,000    40    03/135    5,060
-----VIOLATION PER LICENSE INTERVAL-----
FIRST LAST  VALUE  COUNT
03/135 03/135    5,050    3
-----VIOLATION PER CHANGE OF LICENSE VALUE-----
FIRST LAST  MAXIMUM VALUE  TOTAL
03/010 03/135    5,100    50

-----LICENSE-----
PRODUCT TM  IND  VALUE  GRACE  RESET  VALUE
U/SUM  RULM EXEC    150,000    40    03/130    10,000
-----VIOLATION PER LICENSE INTERVAL-----
FIRST LAST  VALUE  COUNT
00/000 00/000    0    0
-----VIOLATION PER CHANGE OF LICENSE VALUE-----
FIRST LAST  MAXIMUM VALUE  TOTAL
00/000 00/000    0    0

-----LICENSE-----
PRODUCT TM  IND  VALUE  GRACE  RESET  VALUE
U/SUM  RECD EXEC    100(IN 000S)  20    03/135    90,000
-----VIOLATION PER LICENSE INTERVAL-----
FIRST LAST  VALUE  COUNT
00/000 00/000    0    0
-----VIOLATION PER CHANGE OF LICENSE VALUE-----
FIRST LAST  MAXIMUM VALUE  TOTAL
00/000 00/000    0    0
(Actual report may show information for additional TM types
and additional products.)
    
```

- Request your control cards and password.

### 3 ■ Configuring and Licensing the Server

---

#### *Implementing and Maintaining Your Licensing*

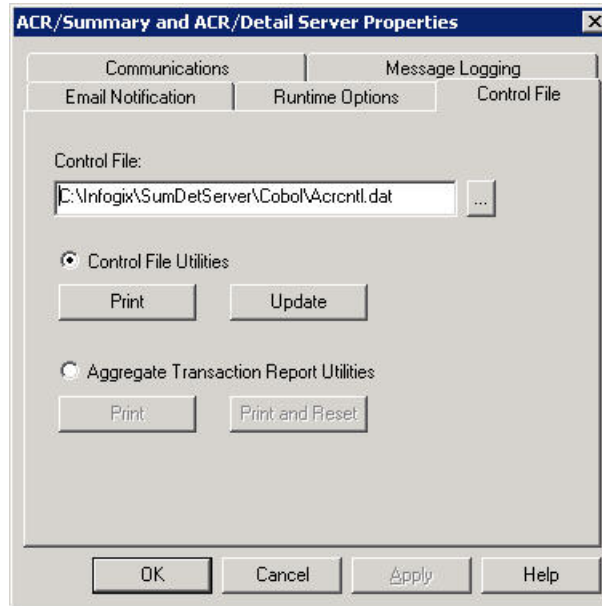
Using the information in “Contacting Customer Support” on page 6, do the following:

- a. Call Customer Support to advise that you are updating the Control File according to your license agreement. Be ready to provide the reason for the update and the scheduled date.
- b. E-mail or fax the report(s) generated in the previous step to Customer Support. Mention any special considerations. For example, inform Customer Support if you are upgrading to a new release or upgrading a CPU. You will receive an e-mail or fax containing your control cards and password.

### Performing the Update

After receiving the fax or e-mail containing the control card(s) and password, complete the following steps:

1. Open the ACR/Summary and ACR/Detail Server and select the Control File tab, shown below.

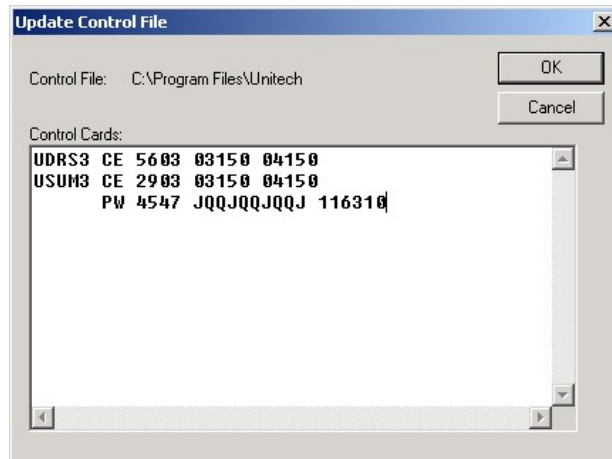


2. In the **Control File** field, enter the fully qualified name of the Control File you are updating. The full name of the path shown above for the Control File is:  
`C:\Infogix\SumDetServer\Cobol\ACRCNTL.DAT`
3. Click **Update**. The Update Control File dialog box displays an empty Control Cards text box.

### 3 ■ Configuring and Licensing the Server

#### *Implementing and Maintaining Your Licensing*

4. Type or paste the control cards and password from the fax or e-mail into the Control Cards area. Below is an example completed control card information:



5. Click **OK**.

The Control File Update (UNIFAX50.RPT) report will be displayed in a new window. Click **Print** if you want to print the report.

Following is an example of the report.

```
CHANGE ID: 111111222202351003
UNICF:  UNI.REL33.UNICF
ACCEPTED  USUM3 CT 7761  C
ACCEPTED  USUM3CCL 6805 AAAAAAAA MF3000L2 0000 0308
ACCEPTED  USUM3CCA 2836 A S
ACCEPTED  USUM3CCE 7600 03150 04150
ACCEPTED  USUM3CCG 8666 03 30
ACCEPTED  PW 6947 JQQJQQJQQJ 673720
*****REQUEST PHASE COMPLETE*****
CHANGED  USUM3 CT 1677  C
CHANGED  USUM3CCL 5086 AAAAAAAA MF3000L2 0000 0308
CHANGED  USUM3CCA 6382 A S
CHANGED  USUM3CCE 0067 03150 04150
CHANGED  USUM3CCG 6668 03 30
UPDATE COMPLETE
```

6. Verify the update by reviewing the UNIFAX50.RPT. If the update completed successfully, the report should contain the message **UPDATE COMPLETE**. If the report shows that any of the control cards failed, print and fax or e-mail the report to Customer Support for assistance.

## Generating the TM Aggregate Transaction Report

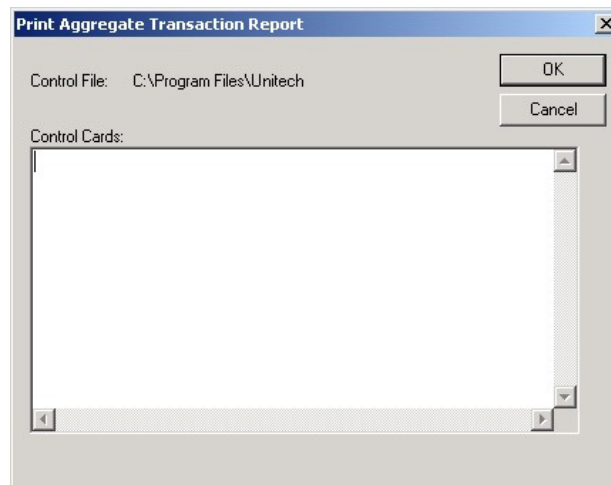
The TM Aggregate Transaction Report is an encrypted report that you may be requested to run by a member of the Customer Development and/or Market Development team. The report prints aggregate counts for each transaction type that is being tracked. Transaction types can include jobs, input sources, records, and rules. After you e-mail the report to the requestor at Infogix, it is decrypted and used for the following purposes:

- To aid in analyzing your transaction usage.
- To implement actual transaction usage licensing where you are billed on a “pay as you go” basis.

Follow the steps below to generate the report from the Control File.

1. Open the ACR/Summary and ACR/Detail Server and select the **Aggregate Transaction Report Utilities** button on the Control File tab.
2. Click **Print** or **Print and Reset**, depending on whether or not you want to reset the transaction counts. In either case, the Print Aggregate Transaction Report dialog box appears.

The Control Cards text box is blank until you enter one of the options described in the next steps.



### 3 ■ Configuring and Licensing the Server

#### Implementing and Maintaining Your Licensing

3. If you selected **Print**, enter one of the following options in the Control Cards text box. Otherwise skip to step 4. (Entries should be made on the first line only, starting at the left end of the line.)

Option	Purpose
<b>ALL P</b>	Print the aggregate counts for both ACR/Summary and ACR/Detail. (Leave one space between <b>ALL</b> and <b>P</b> .)
<b>USUMP</b>	Print the aggregate counts for ACR/Summary only.
<b>UDRSP</b>	Print the aggregate counts for ACR/Detail only.

4. If you selected **Print and Reset**, enter one of the following options in the Control Cards text box. Entries should be made on the first line only, starting at the left end of the line.

Option	Purpose
<b>ALL R</b>	Print the aggregate counts and reset the counters for both ACR/Summary and ACR/Detail. (Leave one space between <b>ALL</b> and <b>R</b> .)
<b>USUMR</b>	Print the aggregate counts and reset the counters for ACR/Summary only.
<b>UDRSR</b>	Print the aggregate counts and reset the counters for ACR/Detail only.

5. When you click **OK**, the aggregate report displays in a new window. The report name is **UNITMPRT.RPT** for the print version and **UNITMRST.RPT** for the print and reset version.  
If you examine the report file, the contents will be encrypted as in the following example:

```
1C:\Infogix\ACRServer\          Infogix, INCORPORATED
02CFLNFGHIJABCDEFGHIJABDEFGHIJABCDEFGHIJBBCEFGHIJABCDEFGHIJABCDEFGHIJABCDEFGHIH
02FKMEFGHIJABCDEFGHIJABCDEFGHIJABCDEFGHIJABCDEFGHIJABCDEFGHIJABCDEFGHIJABCDEFGHI
```

6. If you are going to fax the report to the requestor at Infogix, click **Print** to print the report.
7. Fax or e-mail the report to the person who requested it.



### More About the Entry Format for the Aggregate Transaction Report Dialog Box

The information in the preceding section provides all you need to generate a Transaction Measurement (TM) Report. The following information provides additional detail about the Print Aggregate Transaction Report dialog box that displays when you select Aggregate Transaction Management Utilities option on the Control File tab of the Server Properties dialog box. This information will be helpful if you expand TM licensing to additional products in the future.

Although the Print Aggregate Transaction Report dialog box initially displays blank, it requires information to be in the format described below. Information should only be entered on the first line.

The following graphic shows the left end of the dialog box.

1	2	3	4	5
12345678901234567890123456789012345678901234567890				
PPPP	PPPP	PPPP	PPPP	PPPP

**PPPPO** is repeated 16 times on the line. (The entire line is not shown here.) To allow TM licensing for additional products in the future, a total of 16 products can be specified using the **PPPPO** format.

The first four characters in the positions **PPPP** at the left end of the line specify the product name. Valid entries are as follows:

- **ALL** (followed by a space to extend the entry to four characters) indicates that aggregate counts will be included for each product in the Control File for which TM aggregate counts exist.
- **USUM** indicates that aggregate counts will be included for ACR/Summary only.
- **UDRS** indicates that aggregate counts will be included for ACR/Detail only.

---

**Note:** The product name must match the information in the your Control File.

---

The fifth character is entered in the position **O** at the left end of the line and is used to specify the process option, as follows:

- **P** specifies the Print Only option.
- **R** specifies the Print and Reset option.

## Upgrading from a Pre-Release 4.0 Release

If you are upgrading from a pre-Release 4.0 release, go to “Upgrading from a Pre-Release 4.0 Release” on page 41.

---

## Installing a Client

This chapter provides the system requirements and instructions for installing ACR/Summary Client or ACR/Detail Client. It contains the following sections:

- Before You Begin - page 35
- System Requirements for a Client - page 35
- Steps for Installing a Client - page 36

### Before You Begin

Before you begin installation, do the following:

- Verify that the system where you plan to install the client meets the requirements described in “System Requirements for a Client” on page 35.
- Arrange for network access to ACR/Summary and ACR/Detail Server.

### System Requirements for a Client

Category	Requirement
<b>Hardware and Operating System</b>	IBM or compatible machine with Microsoft Windows Vista, Windows 7, or Windows 2008
<b>Memory</b>	At least 100 MB of Random Access Memory (RAM)
<b>Disk Space</b>	A hard drive with at least 10 MB of free space
<b>Drive</b>	CD-ROM
<b>Network Communication</b>	Access to a network using TCP/IP protocol

System requirements for the ACR/Summary and ACR/Detail Server are on page 7.

## Steps for Installing a Client

1. From the PC where you will install the client, select the appropriate setup program on the ACR/Summary and ACR/Detail x.x Server (where x.x represents the release number):
  - **SetupSum.exe** for ACR/Summary Client
  - **SetupDet.exe** for ACR/Detail ClientThe program is normally in the server's Infogix\SumDetServer\Client directory.
2. The installation wizard will prompt you through the process. When the process completes, the ACR/Summary Client or the ACR/Detail Client will be installed in the Infogix program group, unless you specified a different installation directory.
3. If you have both clients, repeat the installation process for the remaining product.

Following installation, see the appropriate user guide for instructions on accessing, configuring and using the clients:

- *ACR/Summary User Guide for Windows and UNIX*
- *ACR/Detail User Guide for Windows and UNIX*

---

# Installing and Licensing ACR/Workbench

If you purchased the ACR/Workbench for Summary or ACR/Workbench for Detail, this chapter provides the installation and licensing instructions.

This chapter contains the following sections:

- “System Requirements for ACR/Workbench” on page 37
- “Overview of ACR/Workbench Installation and Setup Steps” on page 38
- “Uninstall the Previous Release if Appropriate” on page 38
- “Installing the CD” on page 38
- “Installing the Net Express Licensing Key” on page 39
- “Upgrading from a Pre-Release 4.0 Release” on page 40
- “Using ACR/Workbench” on page 40

## System Requirements for ACR/Workbench

Below are the minimum system requirements for the ACR/Workbench for Summary or ACR/Workbench for Detail:

Category	Requirement
<b>Hardware and Operating System</b>	IBM or compatible machine with Microsoft Windows Vista, Windows 7, or Windows 2008
<b>Processor</b>	Intel Pentium III or Pentium IV, or equivalent
<b>Memory</b>	At least 100 MB of Random Access Memory (RAM)
<b>Disk Space</b>	A hard drive with at least 30 MB of free space (more if data files are stored locally)
<b>Drive</b>	CD-ROM

## Overview of ACR/Workbench Installation and Setup Steps

This section summarizes the steps for installation and setup of ACR/Workbench for Summary or ACR/Workbench for Detail. Consult the next sections in order to perform the steps.

### Uninstall the Previous Release if Appropriate

If you are upgrading from a previous release, uninstall the old release only if appropriate, as explained below:

- If you want to install and test the new release of ACR/Workbench while continuing to support the old release (this is called a dual install), do not uninstall the old release.
- If you do not want to use the dual install feature, uninstall the previous version of ACR/Workbench using the **Add or Remove Programs** option on the Control Panel.

### Installing the CD

---

**Note:** Before you begin, review “Uninstall the Previous Release if Appropriate” above. Ensure that you have uninstalled the previous release only if you do not want to use dual install.

---

1. Insert the installation CD into the CD-ROM drive on the PC.
2. The installation program usually starts automatically. If it does not, select **R**un from the Start menu and run the **setup.exe** program located on the CD.
3. Follow the prompts through the installation process.

The program will install the product in the one of the following unless you specify a different installation directory:

C:\Infogix\Detail32  
C:\Infogix\Summary32

## Installing the Net Express Licensing Key

When you install ACR/Workbench for the first time, a Micro Focus licensing key is required to properly run ACR/Summary or ACR/Detail jobs. If you install both products, you only need to install the key once. Instructions for installing the key are provided below.

1. Use Windows Explorer to display the contents of the installation folder that was created in step 3 on page 38. Open the appserv (Application Server) subfolder.
2. Select **setup.exe** to launch the Micro Focus Application Server for Net Express 4.0 Setup wizard.

---

**Note:** Setup.exe cannot be executed in a 64-bit Windows environment, so in this situation an incompatible file version error occurs.

In a 64-bit environment, select **aps10a40.exe** instead to launch the Micro Focus Application Server Service Pack for Net Express 4.0 Setup wizard.

---

If you need to install the licensing key, the setup program wizard will prompt you through the process, as described in the next step. If you already have the proper licensing key installed, the message APPLICATION SERVER FOR NET EXPRESS 4.0 IS ALREADY INSTALLED displays. Click **No** at the upgrade option and **OK** at the second message that displays.

3. To proceed with the licensing setup, follow the instructions on the screen and accept the default settings.

---

**Note:** We recommend that you accept the default location for the licensing files. The licensing files cannot be in the same location as the ACR/Workbench DLLs.

---

4. Call Customer Support when you reach the License Registration dialog box. See “Contacting Customer Support” on page 6. A representative will give you a serial number and a license number to enter in the dialog box.
5. Once you have entered the numbers, click **OK**. Then, click **Next** until the LICENSE INSTALLED OK message displays. Click **OK**, again. Then, click **Next** until the message SETUP COMPLETED SUCCESSFULLY displays.

## 5 ■ Installing and Licensing ACR/Workbench

---

### *Upgrading from a Pre-Release 4.0 Release*

6. If you purchased both ACR/Workbench for Summary and ACR/Workbench for Detail, repeat the instructions in “Installing the CD” on page 38. You do not need to repeat the instructions in this section as you only need to install one Net Express key on each PC where the ACR/Workbench is installed.

## Upgrading from a Pre-Release 4.0 Release

See the instructions in “Upgrading from a Pre-Release 4.0 Release” on page 41.

## Using ACR/Workbench

Refer to one of the following guides for instructions on starting, configuring, and using ACR/Workbench.

- “Using the Workbench” appendix in *ACR/Summary User Guide for Windows and UNIX*.
- “Using the Workbench” appendix in *ACR/Detail User Guide for Windows and UNIX*.



---

## Upgrading from a Pre-Release 4.0 Release

This chapter provides instructions required for upgrading ACR/Summary and ACR/Detail Server and ACR/Workbench from a release previous to Release 4.0.

Release 4.0 provides extended internal items, which increase the maximum extractible length for numeric data from 15 to 30 digits, and for text data from 8 to 80 characters. The upgrade procedures described here expand your definition and history databases to make room for these new items.

ACR/Summary and ACR/Detail each have two expansion utilities for this purpose: one for expanding the history database and another for expanding the definition database. The utilities and sample batch files for running them are included with Release 4.0 and subsequent releases of ACR/Summary and ACR/Detail Server and ACR/Workbench.

To run the expansion utilities under Windows, you need to know how to edit and execute batch files.

---

**Note:** These upgrade procedures should be followed after you have installed the new release and updated your license based on the instructions in the preceding chapters.

---

This document contains the following sections:

- “Upgrading ACR/Summary for Windows” on page 41
- “Upgrading ACR/Detail for Windows” on page 45

## Upgrading ACR/Summary for Windows

### Expanding the History Database for ACR/Summary

The ACR/Summary History Expansion Utility (SUMEXPHF.BAT) copies and expands pre-release 4.0 history data into a history database for Release 4.0 or higher.

This utility produces a System Output Report (SYSOUT.rpt) that lists any system output messages.

## 6 ■ Upgrading from a Pre-Release 4.0 Release

### Upgrading ACR/Summary for Windows

---

The steps for editing and running SUMEXPHF.BAT are as follows:

1. Make a copy of the SUMEXPHF.BAT file for modification. Do not modify the original template.

---

**Warning:** It is very important that you perform the expansion on a copy of SUMEXPHF.BAT, and keep the original as a backup.

---

The .bat file will be in one of the following locations:

- If you have ACR Summary and ACR/Detail Server, SUMEXPHF.BAT is in the \bat folder. The default installation path for the Server is C:\Infogix\ACRSumDet Server.
  - If you have ACR/Workbench for Summary, SUMEXPHF.BAT is in the ACR/Summary installation directory. The default installation path is C:\Infogix\Summary32.
2. Open the copy you made of SUMEXPHF.BAT file and perform the following edits:

---

**Warning:** You MUST make these edits before running the .bat file.

---

- c. Edit the ACRSWB parameter, highlighted below:

```
::
-----
:: Set ACR/Summary working directory
::-----
SET ACRSWB=??????
```

Do one of the following:

- If you have the Server, replace ?????? with the path of the ACR COBOL directory.
  - If you have ACR/Workbench for Summary, replace ?????? with the ACR/Summary installation directory. The installation directory is the one that contains unirun.exe.
- d. In the default values section of the .bat file, shown below, define the following files that are input or output of the utility:

```
::-----
:: Set the default values for the files and parameters
::-----
SET UNIHFOLD=??????
SET UNIHF=??????
```

UNIHFOLD: Replace ?????? with the path and name of the pre-Release 4.0 ACR/Summary history database file that contains the history data you want to copy/expand.

UNIHF: Replace ?????? with the path and name of the new ACR/Summary history database file.

3. Save your changes and run SUMEXPHF.BAT.
4. Check the SYSOUT report for any error messages.

## Expanding the Definition Database for ACR/Summary

The ACR/Summary Definition Expansion Utility (SUMEXPDF.BAT) copies and expands pre-release 4.0 definition data into a definition database for Release 4.0 or higher.

This utility produces a System Output Report (SYSOUT.rpt) that lists any system output messages.

The steps for editing and running SUMEXPDF.BAT are as follows:

1. Make a copy of the SUMEXPDF.BAT file for modification. Do not modify the original template.

---

**Warning:** It is very important that you perform the expansion on a copy of SUMEXPDF.BAT, and keep the original as a backup.

---

The .bat file will be in one of the following locations:

- If you have ACR Summary and ACR/Detail Server, SUMEXPDF.BAT is in the \bat folder. The default installation path for the Server is C:\Infogix\ACRSumDet Server.
- If you have ACR/Workbench for Summary, SUMEXPDF.BAT is in the ACR/Summary installation directory. The default installation path is C:\Infogix\Summary32.

## 6 ■ Upgrading from a Pre-Release 4.0 Release

### Upgrading ACR/Summary for Windows

---

2. Open the copy you made of SUMEXPDF.BAT file and perform the following edits:

**Warning:** You MUST make these edits before running the .bat file.

---

- a. Edit the ACRSWB parameter, highlighted below:

```
::  
-----  
:: Set ACR/Summary working directory  
::-----  
SET ACRSWB=??????
```

Do one of the following:

- If you have the Server, replace ?????? with the path of the ACR COBOL directory.
  - If you have ACR/Workbench for Summary, replace ?????? with the ACR/Summary installation directory. The installation directory is the one that contains unirun.exe.
- b. In the default values section of the .bat file, shown below, define the following files that are input or output of the utility:

```
::-----  
:: Set the default values for the files and parameters  
::-----  
SET UNIINP=UNIINP.DAT  
SET UNIDFOLD=??????  
SET UNIDF=??????
```

UNIDFOLD: Replace ?????? with the path and name of the pre-Release 4.0 ACR/Summary definition database file that contains the definition data you want to copy/expand.

UNIDF: Replace ?????? with the path and name of the new ACR/Summary definition database file.

3. Save your changes and run SUMEXPDF.BAT.
4. Check the SYSOUT report for any error messages.

## Optional: Update Job Output Options

For existing (pre-release 4.0) jobs, the default for the Extended Internal Items option in the Job Output Options dialog box is Do not print. This means that the Extended Internal Items section will not be included in the Control Report for those jobs.

(For new jobs created after the upgrade to Release 4.0, the default for this option will be Print.)

If your site wants the Extended Internal Items section to print in the Control Report for one or more existing jobs that you plan to use after the upgrade, you need to make a change to the job output options for each of those jobs as follows:

1. Open ACR/Summary.
2. Open the job.
3. Select Print Control Reports.
4. Change the Extended Internal Items option to Print.

## Upgrading ACR/Detail for Windows

### Expanding the History Database for ACR/Detail

The ACR/Detail History Expansion Utility (DETEXPHF.BAT) copies and expands pre-release 4.0 history data into a history database for Release 4.0 or higher.

This utility produces a System Output Report (SYSOUT.rpt) that lists any system output messages.

The steps for editing and running DETEXPHF.BAT are as follows:

1. Make a copy of the DETEXPHF.BAT file for modification. Do not modify the original template.

---

**Warning:** It is very important that you perform the expansion on a copy of DETEXPHF.BAT, and keep the original as a backup.

---

The .bat file will be in one of the following locations:

- If you have ACR Summary and ACR/Detail Server, DETEXPHF.BAT is in the \bat folder. The default installation path for the Server is:  
C:\Infogix\ACRSumDet Server.

## 6 ■ Upgrading from a Pre-Release 4.0 Release

### Upgrading ACR/Detail for Windows

---

- If you have ACR/Workbench for Detail, DETEXPHF.BAT is in the ACR/Detail installation directory. The default installation path is C:\Infogix\Detail32.
2. Open the copy you made of DETEXPHF.BAT file and perform the following edits:

---

**Warning:** You MUST make these edits before running the .bat file.

---

- a. Edit the ACRDWB parameter, highlighted below:

```
::
-----
:: Set ACR/Detail working directory
:-----
SET ACRDWB=??????
```

Do one of the following:

- If you have the Server, replace ?????? with the path of the ACR COBOL directory.
  - If you have ACR/Workbench for Detail, replace ?????? with the ACR/Detail installation directory. The installation directory is the one that contains unirun.exe.
- b. In the default values section of the .bat file, shown below, define the following files that are input or output of the utility:

```
::-----
:: Set the default values for the files and parameters
:-----
SET UNIHFOLD=??????
SET UNIHF=??????
```

UNIHFOLD: Replace ?????? with the path and name of the pre-Release 4.0 ACR/Detail history database file that contains the history data you want to copy/expand.

UNIHF: Replace ?????? with the path and name of the new ACR/Detail history database file.

3. Save your changes and run DETEXPHF.BAT.
4. Check the SYSOUT report for any error messages.

## Expanding the Definition Database for ACR/Detail

The ACR/Detail Definition Expansion Utility (DETEXPDF.BAT) copies and expands pre-release 4.0 definition data into a definition database for Release 4.0 or higher.

This utility produces a System Output Report (SYSOUT.rpt) that lists any system output messages.

The steps for editing and running DETEXPDF.BAT are as follows:

1. Make a copy of the DETEXPDF.BAT file for modification. Do not modify the original template.

---

**Warning:** It is very important that you perform the expansion on a copy of DETEXPDF.BAT, and keep the original as a backup.

---

The .bat file will be in one of the following locations:

- If you have ACR Summary and ACR/Detail Server, DETEXPDF.BAT is in the \bat folder. The default installation path for the Server is C:\Infogix\ACRSumDet Server.
  - If you have ACR/Workbench for Detail, DETEXPDF.BAT is in the ACR/Detail installation directory. The default installation path is C:\Infogix\Detail32.
2. Open the copy you made of DETEXPDF.BAT file and perform the following edits:

---

**Warning:** You MUST make these edits before running the .bat file.

---

- a. Edit the ACRDWB parameter, highlighted below:

```
::
```

```
-----  
:: Set ACR/Detail working directory  
::-----
```

```
SET ACRDWB=??????
```

Do one of the following:

- If you have the Server, replace ?????? with the path of the ACR COBOL directory.
  - If you have ACR/Workbench for Detail, replace ?????? with the ACR/Detail installation directory. The installation directory is the one that contains unirun.exe.
- b. In the default values section of the .bat file, shown below, define the following files that are input or output of the utility:

## 6 ■ Upgrading from a Pre-Release 4.0 Release

---

### *Upgrading ACR/Detail for Windows*

```
:-----  
:: Set the default values for the files and parameters  
:-----  
  
SET UNIINP=UNIINP.DAT  
SET UNIDFOLD=??????  
SET UNIDF=??????
```

UNIDFOLD: Replace ?????? with the path and name of the pre-Release 4.0 ACR/Detail definition database file that contains the definition data you want to copy/expand.

UNIDF: Replace ?????? with the path and name of the new ACR/Detail definition database file.

3. Save your changes and run DETEXPDF.BAT.
4. Check the SYSOUT report for any error messages.



---

# Index

## Numerics

64-bit systems **12, 20, 39**

## A

ACR/Connector

configuring communications for **21**

IN/Sync feature **21**

ACR/Workbench

dual install **38**

installing **37**

installing the CD **38**

requirements **37**

ACRCNTL.DAT (Control File) **29**

administering the server **13**

Windows 2003 **14**

Windows 7 or 2008 **16**

administration port number **9, 21**

Aggregate Transaction Report

entry format **33**

generating **31**

sample **32**

see Transaction Measurement Report

## C

CD

for installing the server **9**

client

installing **36**

system requirements **35**

User port number **10, 21**

communications

activating e-mail notification **23**

Administration port number **9, 21**

for ACR/Connector **21**

User port number **10, 21**

configuring the server **13**

contacting Product Support

for licensing upgrades **27**

Control File

ACRCNTL.DAT **29**

aggregate count print and reset options  
**32**

aggregate count print options **32**

completion report **30**

contacting Product Support **27**

licensing **25**

tab in server properties dialog box **25**

updating **29**

when to update **25**

Control File Update report **30**

## D

dual install

ACR/Workbench **38**

server **8**

## E

e-mail notification (server properties) **23**

## I

IN/Sync **21**

installation

of client **35, 36**

of Net Express key

for ACR/Workbench **39**

for server **11**

of server **7**

installing ACR/Workbench **38**

## K

key for Net Express **11**

## L

licensing **13**

Control File **25**

generating TM Report **30**

Micro Focus Application Server

key for Net Express **11**

reports **26**

UNIFAX50.RPT **30**

- updating the Control File
  - performing the update **29**
  - preparation **25**
- log **10**
- logon account for server **13**
  - Windows 2003 **14**
  - Windows 7 or 2008 **16**
- M**
- message logging
  - setting during installation **10**
  - setting through server properties **22**
- Micro Focus Application Server
  - licensing key **11**
- N**
- Net Express licensing key **11**
- notification by e-mail **23**
- O**
- operating system
  - requirement for ACR/Workbench **37**
- P**
- ports
  - for client users **9, 21**
  - for server administration **9, 21**
- Product Report (UNI10PR.RPT) **27**
- Product Support
  - contacting for Control File updates **27**
- R**
- reports
  - Aggregate TM count (UNITMPRT.RPT) **32**
  - Aggregate TM count and reset (UNITMRST.RPT) **32**
  - Control File Update Report (UNIFAX50.RPT) **29, 30**
  - for licensing control **26**
  - Product Report (UNI10PR.RPT) **27**
  - Transaction Management Report (UNI10PRA.RPT) **27**
- reset Aggregate TM counts (Control File) **32**
- runtime options (server properties) **24**

- S**
- server
  - Control File **25**
  - creating logon account **13**
    - Windows 2003 **14**
    - Windows 7 or 2008 **16**
  - dual install **8**
  - installing **8, 9**
  - log **10**
  - starting **18**
  - system requirements **7**
- server properties
  - Communications **21**
  - configuring or modifying **20**
  - Control File **25**
  - Email notification **23**
  - Message logging **22**
  - Runtime options **24**
- setup.exe **38**
  - for server **9**
  - for server Net Express key **11**
- SetupDet.exe **36**
- SetupSum.exe **36**
- starting the server **18**
- support
  - contact information **6**
- system requirements
  - ACR/Workbench **37**
  - clients **35**
  - server **7**
- T**
- technical support
  - contact information **6**
- TM
  - aggregate counts
    - for ACR/Detail, only **33**
    - for ACR/Summary, only **33**
    - for all **33**
  - Aggregate report
    - count **31**
    - count and reset **31**
  - entry format for Aggregate Transactions **33**
  - field for TM in Product Report **26**
- Transaction Measurement (TM) Report

- generating **26**
- sample (UNILSTA) **27**
- see Aggregate Transaction Report
- transaction reports
  - aggregate **31**
  - generated with Control File Utilities **26**

## **U**

- UNI10PR.RPT (Product Report) **26**
- UNI10PRA.RPT (Transaction Management Report) **26**
- UNIFAX50.RPT (Control Update) **30**
- UNILSTA (TM Report) **27**
- UNITMPRT.RPT (Aggregate TM count) **31, 32**
- UNITMRST.RPT (Aggregate TM count and reset) **31, 32**
- updating or modifying
  - server properties **20**
- updating the Control File
  - performing the update **29**
  - preparation **25**
- user port number **10, 21**

## **W**

- Windows
  - requirements for ACR/Workbench **37**
- Write messages to log file **10**

